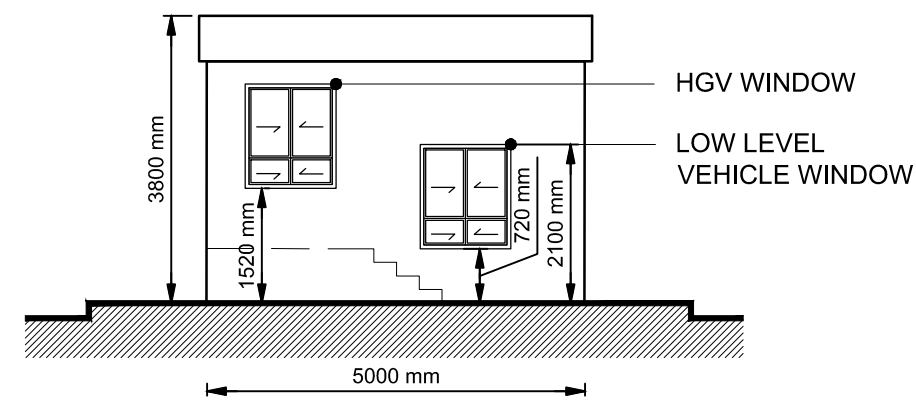
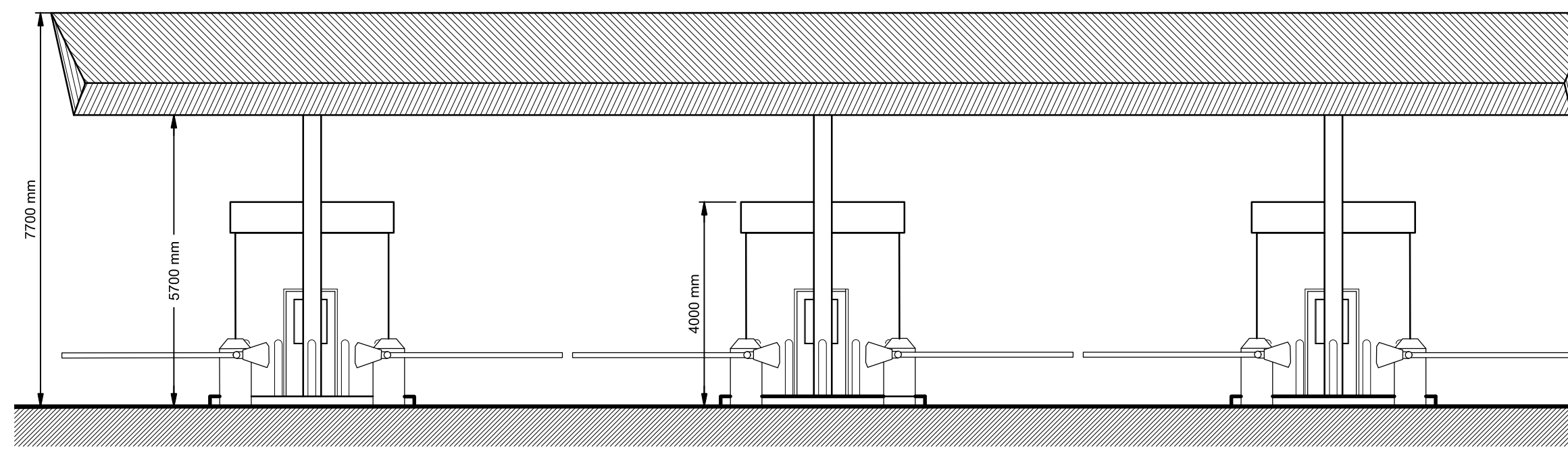


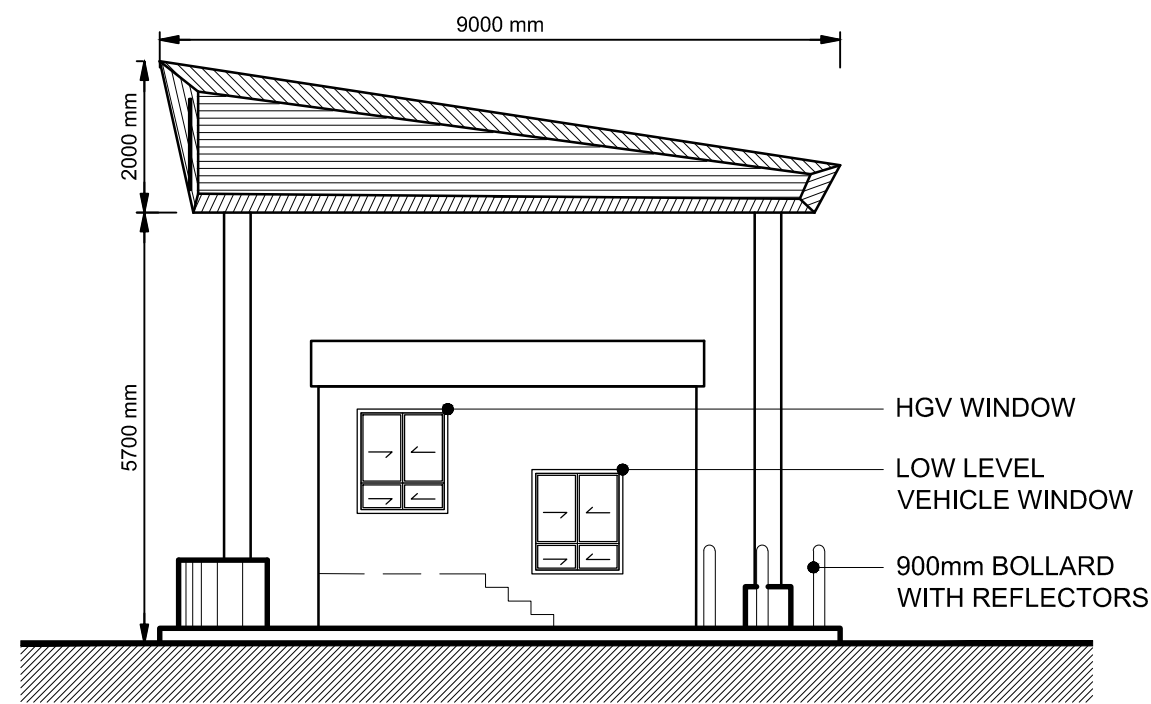
SIDE ELEVATION 1 (WEST)  
SCALE 1:100



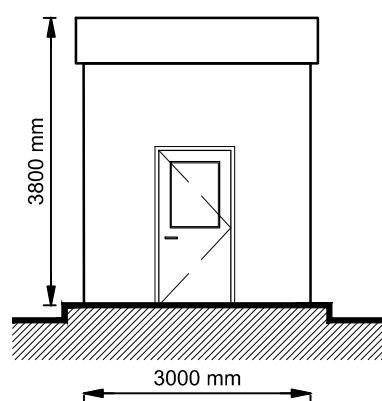
SIDE ELEVATION 2 (EAST)  
SCALE 1:100



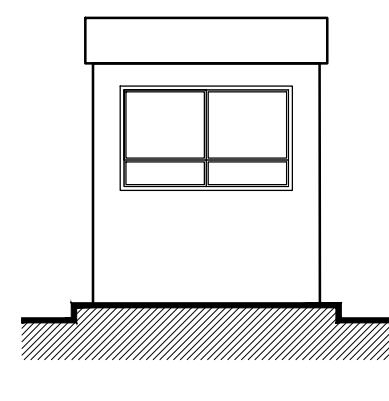
TYPICAL SOUTH ELEVATION OF BOOTHS AND CANOPY  
SCALE 1:100



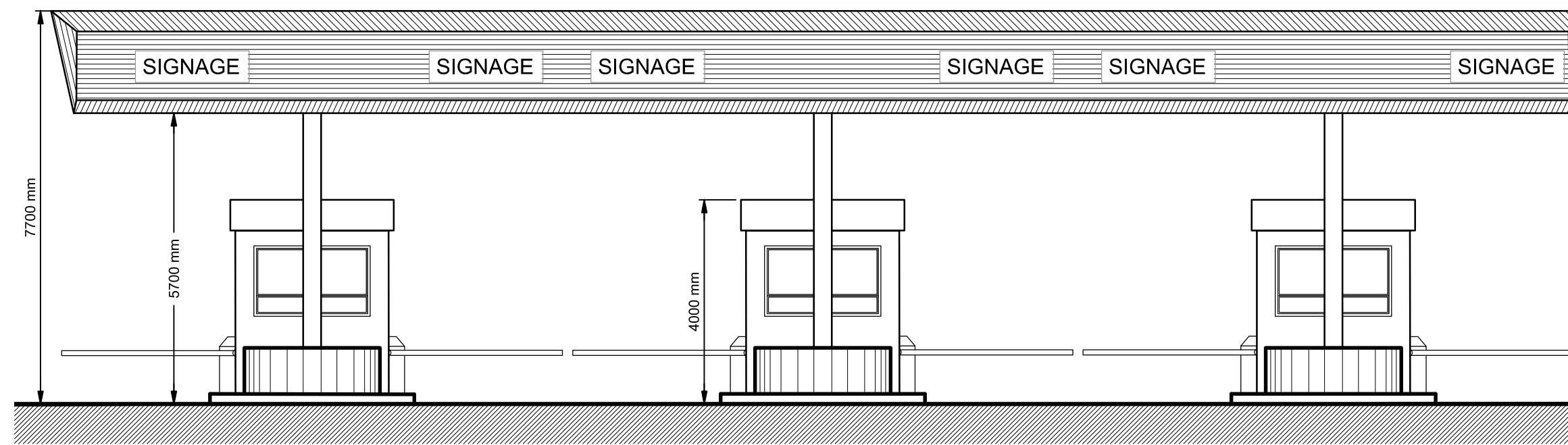
TYPICAL SIDE ELEVATION TO THE BOOTHS AND CANOPY  
SCALE 1:100



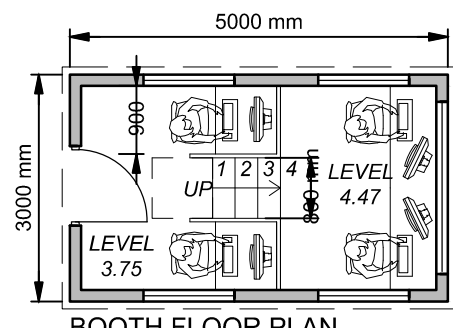
REAR ELEVATION (SOUTH)  
SCALE 1:100



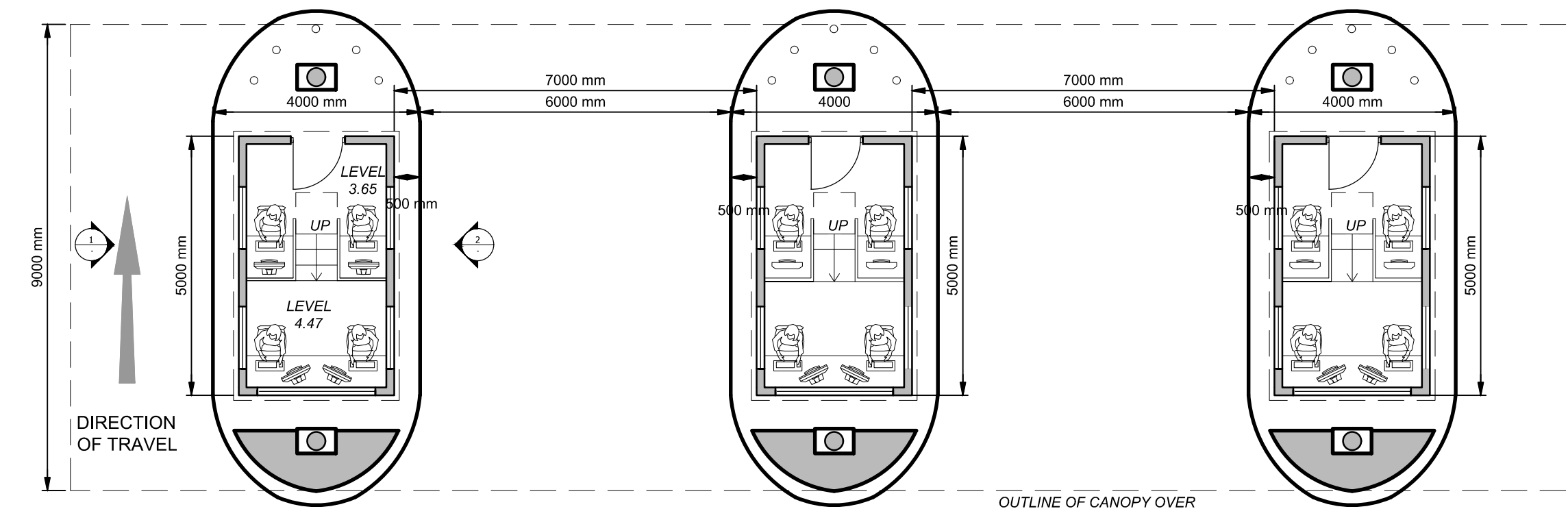
FRONT ELEVATION (NORTH)  
SCALE 1:100



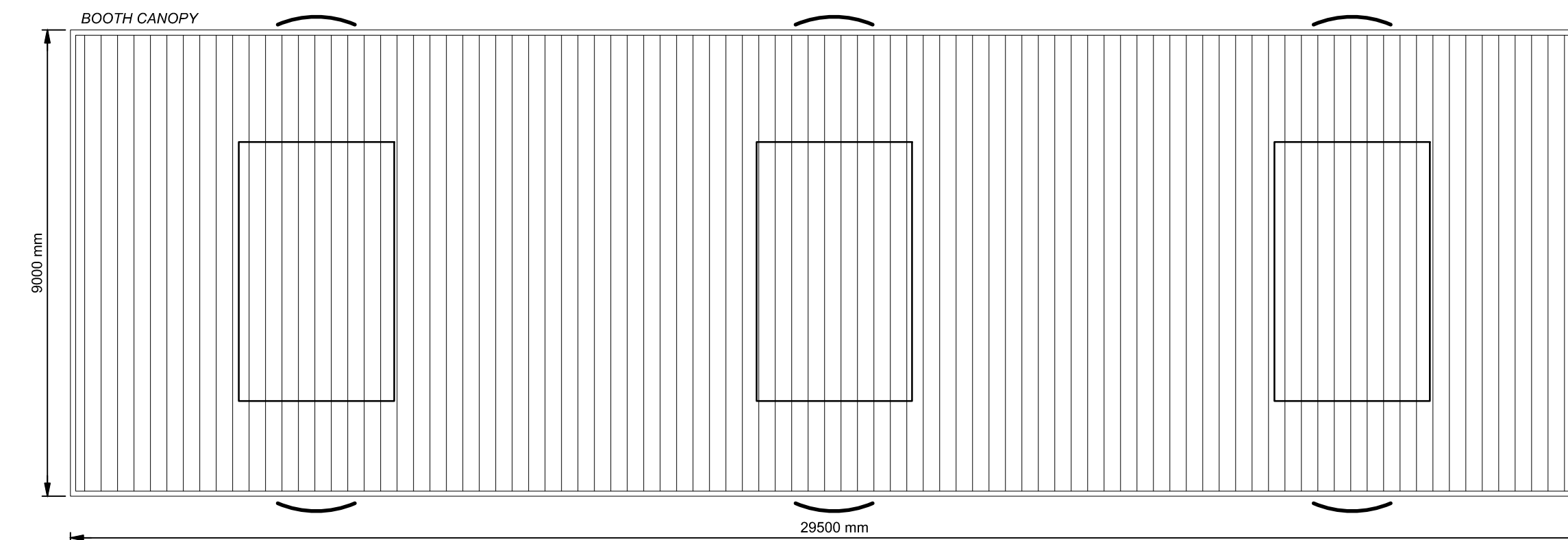
TYPICAL NORTH ELEVATION ON APPROACH TO THE BOOTHS AND CANOPY  
SCALE 1:100



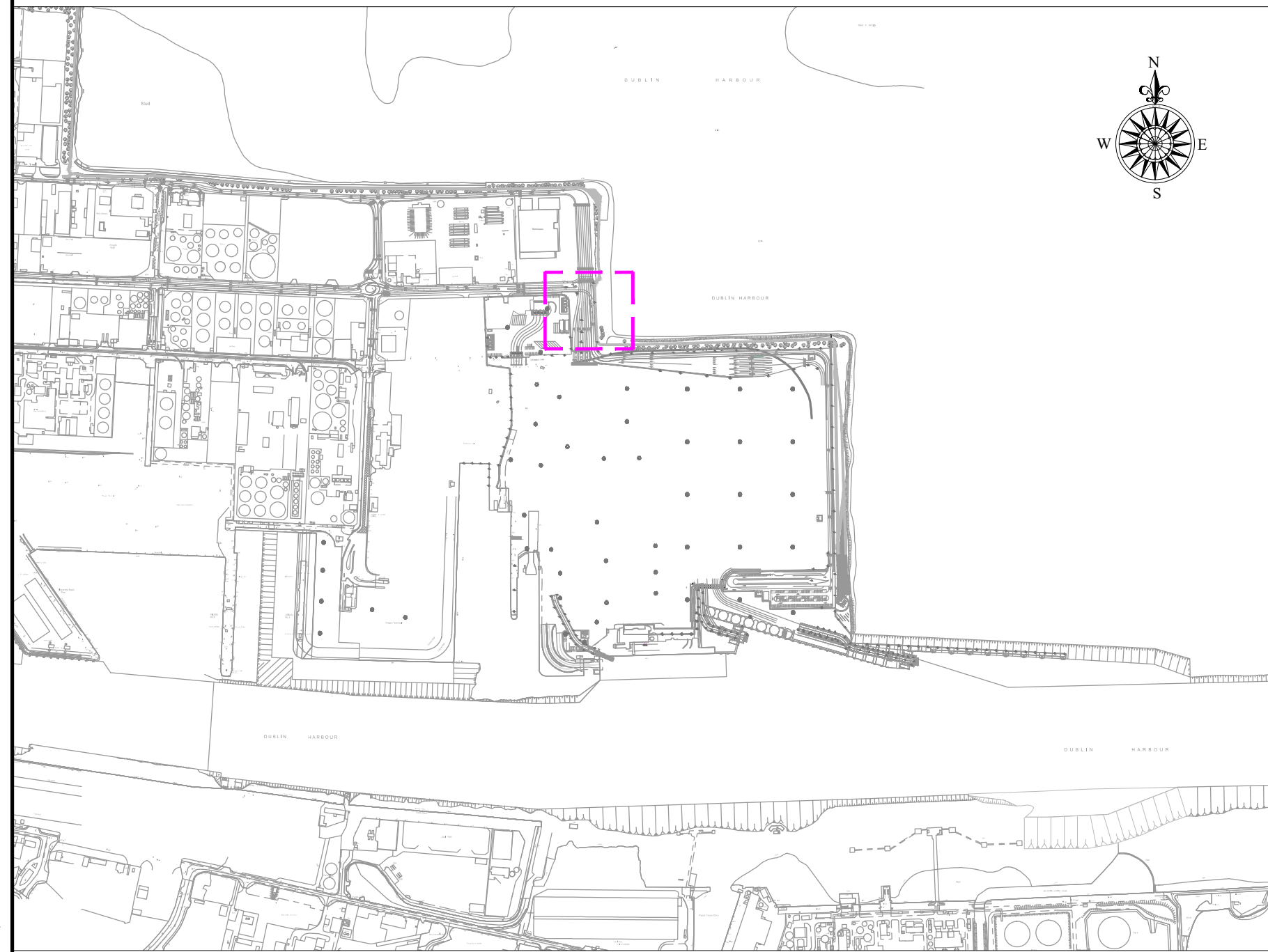
BOOTH FLOOR PLAN  
SCALE 1:100



TYPICAL PLAN LAYOUT OF DOUBLE BOOTHS & CANOPY  
SCALE 1:100



BOOTH CANOPY ROOF LEVEL  
SCALE 1:100



LOCATION PLAN  
SCALE 1:10,000 @ A1

GENERAL NOTES

- ALL DIMENSIONS ARE IN METRES UNLESS NOTED OTHERWISE
- ONLY WRITTEN DIMENSIONS SHALL BE USED. NO DIMENSIONS SHALL BE SCALED FROM THE DRAWINGS
- ALL LEVELS ARE IN METRES AND ARE TO ORDNANCE DATUM MALIN UNLESS NOTED OTHERWISE
- ALL COORDINATES ARE IN METRES AND ARE TO IRISH TRANSVERSE MERCATOR
- DRAWINGS ARE TO BE READ IN CONJUNCTION WITH THE SPECIFICATION
- ALL DRAWINGS ARE THE PROPERTY OF ATKINS BYRNELOOBY.
- [xx.xx m CD] REFER TO LEVELS AT CHART DATUM (DUBLIN PORT)
- ORDNANCE DATUM MALIN [O.D.M.]



- OS MAP SHEET NO:  
3198-18, 3198-19, 3198-20, 3198-23, 3198-24, 3198-25, 3199-16, 3199-17, 3199-18, 3199-21, 3199-23, 3199-24, 3264-2, 3264-3, 3264-4, 3264-5, 3264-8, 3264-9, 3264-10, 3264-13, 3264-14, 3264-15, 3265-1, 3265-6, 3265-7, 3265-8, 3265-9, 3265-11, 3265-12.

FINISHES

- CANOPY - POLYESTER POWDER COATED PROFILED STEEL CLADDING
- BOOTHS - POLYESTER POWDER COATED SMOOTH STEEL CLADDING
- DOORS & WINDOWS - DOUBLE GLAZED ALUMINIUM
- COLUMNS - GALVANISED STEEL

Rev	Description	By	Date	Chk'd	Auth
00	ISSUED FOR PLANNING	MOD	07.19	KH	AC

**ATKINS**  
Member of the SNC-Lavalin Group  
**BYRNELOOBY**  
WS Atkins Ireland Ltd. & ByrneLooby Partners Ltd.  
Atkins House,  
150 Airside Business Park,  
Swords, Co. Dublin

Client  
**COMHLACHT CHALAFOR  
ATHA CLIATH  
DUBLIN PORT COMPANY**

Project  
**MP2**

Purpose <b>PLANNING</b>	
Title <b>TYPICAL BOOTH DETAILS AT HGV CHECK-IN</b>	
Original Scale <b>As Shown @ A1</b>	Design/Drawn <b>MOD</b>
Checked <b>KH</b>	Authorised <b>AC</b>
Date <b>05.07.19</b>	Date <b>05.07.19</b>
Status <b>P</b>	Drawing Number <b>CP1770-ATK-01-ZZ-M2-CE-0061</b>
Rev <b>00</b>	